

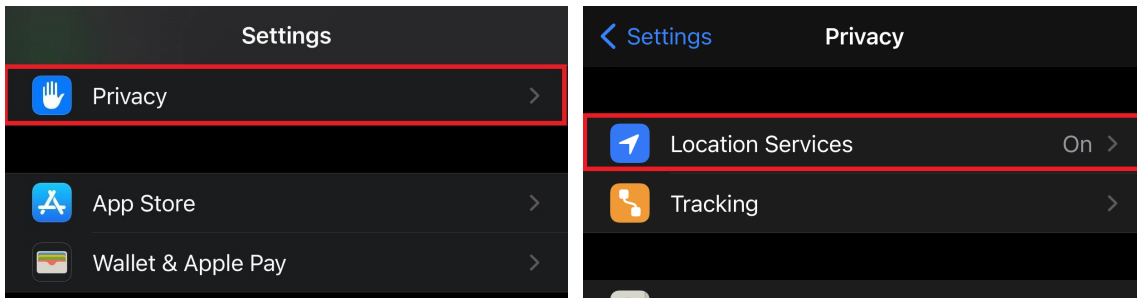
iOS (14.2)

Google Chrome:

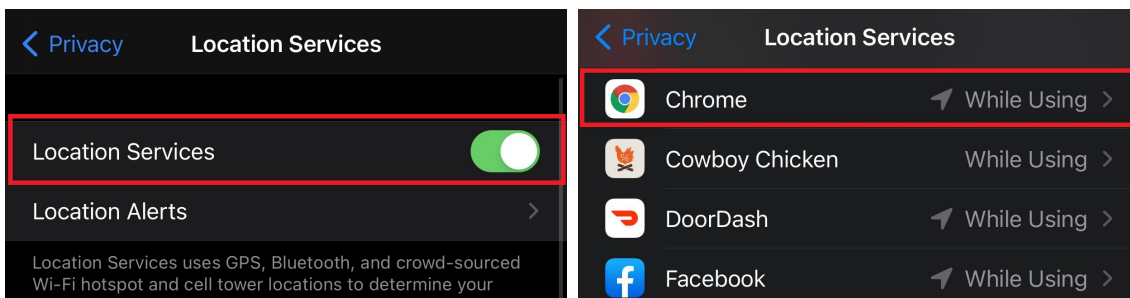
- First, navigate to **Settings**



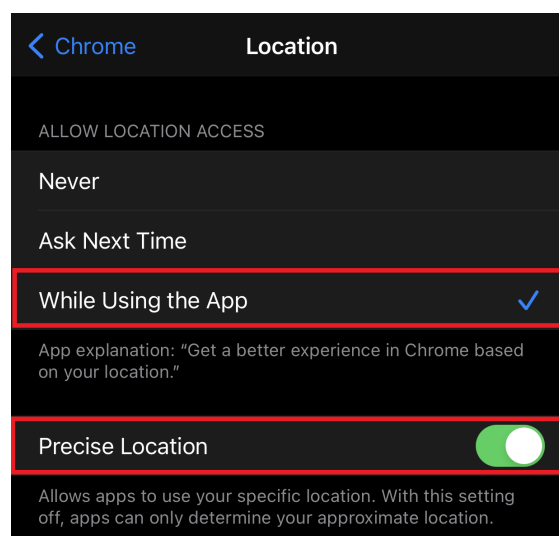
- Scroll down to **Privacy** and select **Location Services**



- Select **Location** to turn on location services, then Scroll down and select **Chrome** from the list of installed applications



- From the Chrome specific Location settings, select **While Using the App** and **Precise Location** to allow Chrome to use your device location.

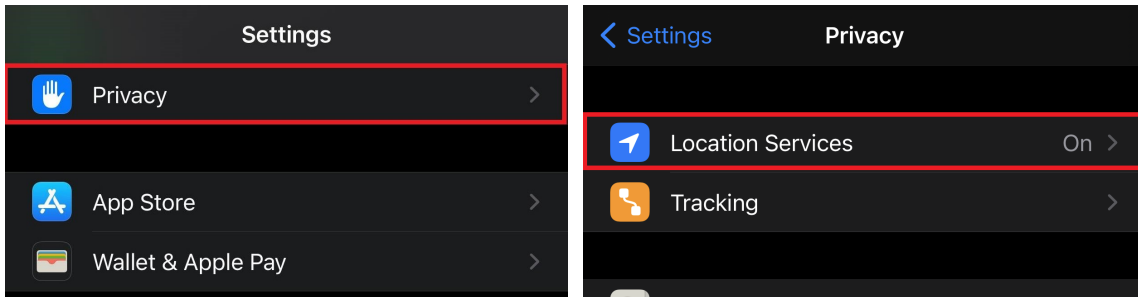


Firefox:

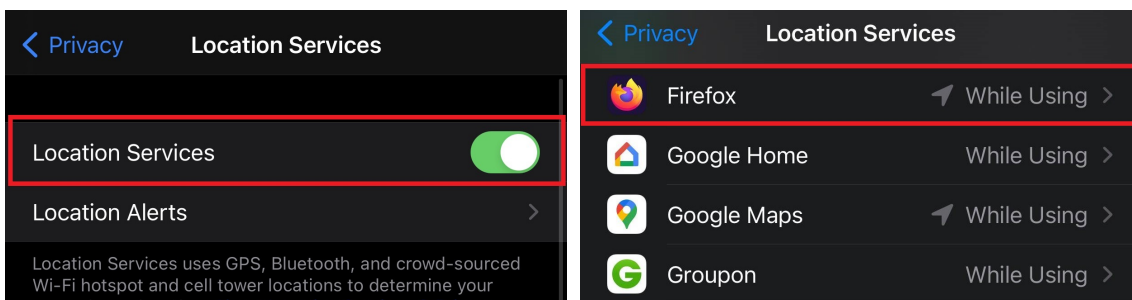
- First, navigate to **Settings**



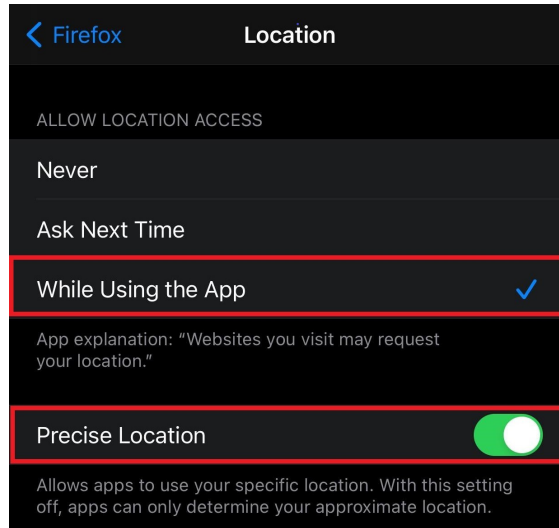
- Scroll down to **Privacy** and select **Location Services**



- Select **Location** to turn on location services, then Scroll down and select **Firefox** from the list of installed applications

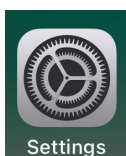


- From the Firefox specific Location settings, select **While Using the App** and **Precise Location** to allow Firefox to use your device location.

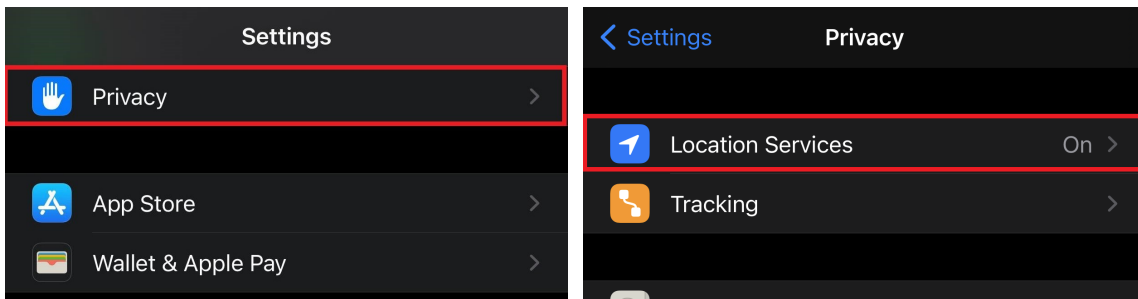


Safari:

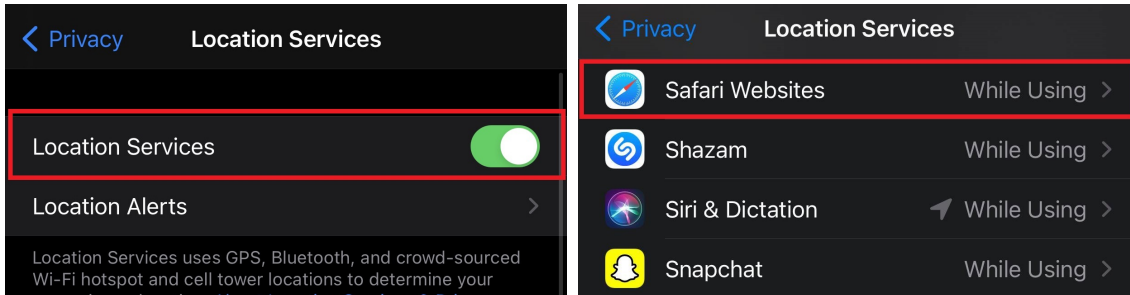
- First, navigate to **Settings**



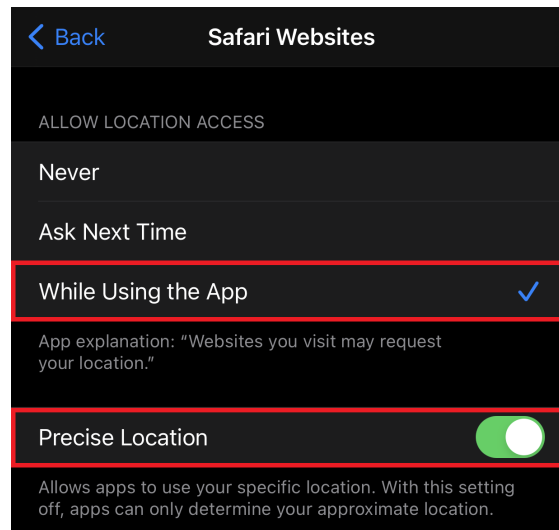
- Scroll down to **Privacy** and select **Location Services**



- Select **Location** to turn on location services, then Scroll down and select**Safari** from the list of installed applications



- From the Safari specific Location settings, select**While Using the App** and **Precise Location** to allow Safari to use your device location.



🔄Revision #6

★Created Fri, Dec 11, 2020 7:15 AM by [Admin](#)

✎Updated Fri, Feb 23, 2024 9:53 PM by [Elizabeth Lukan](#)