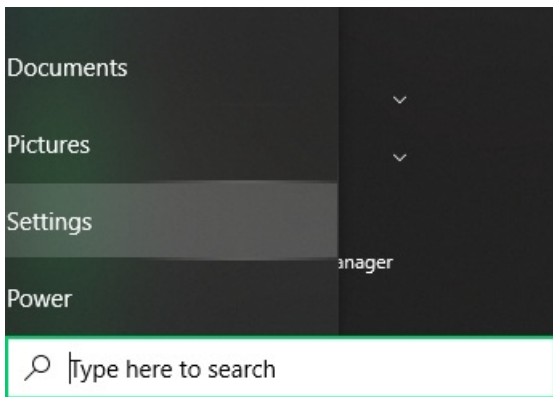


Windows 10

System:

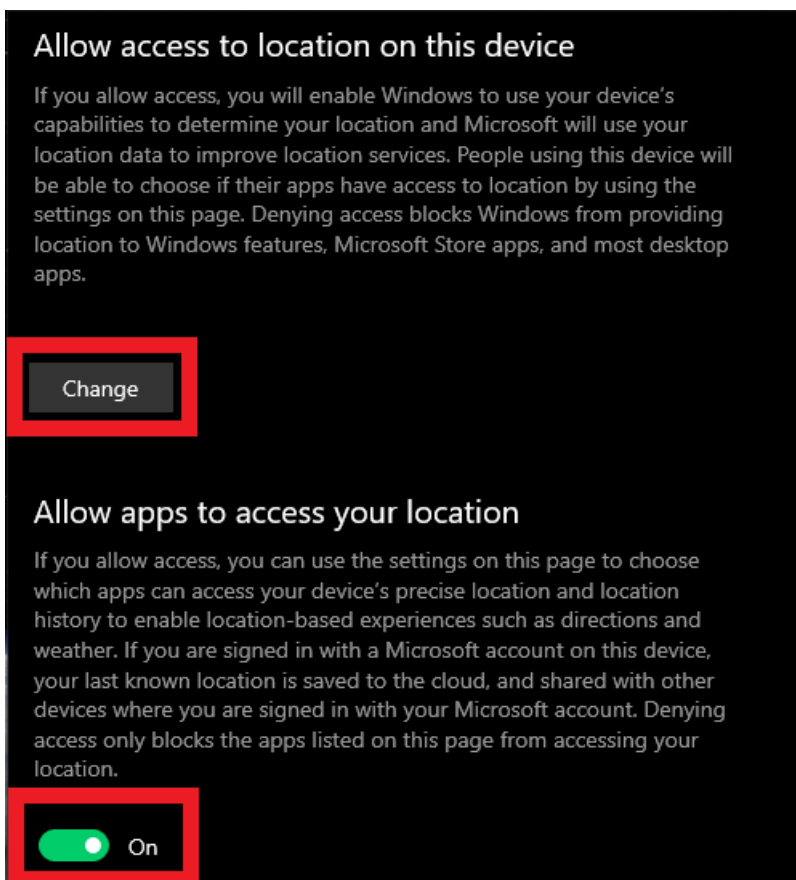
- From the Windows desktop, go to: **Start** and select the **Settings** from the lower-left panel menu.



- From the Settings menu, select **Privacy** and then select **Location** from the privacy menu



- To set the location on or off, select **Change** located under 'Location for this device is on/off', then select the switch to turn on or off.



- If Location is turned on, select which apps can use your location by selecting the appropriate on/off switches (to the right of the app).

